

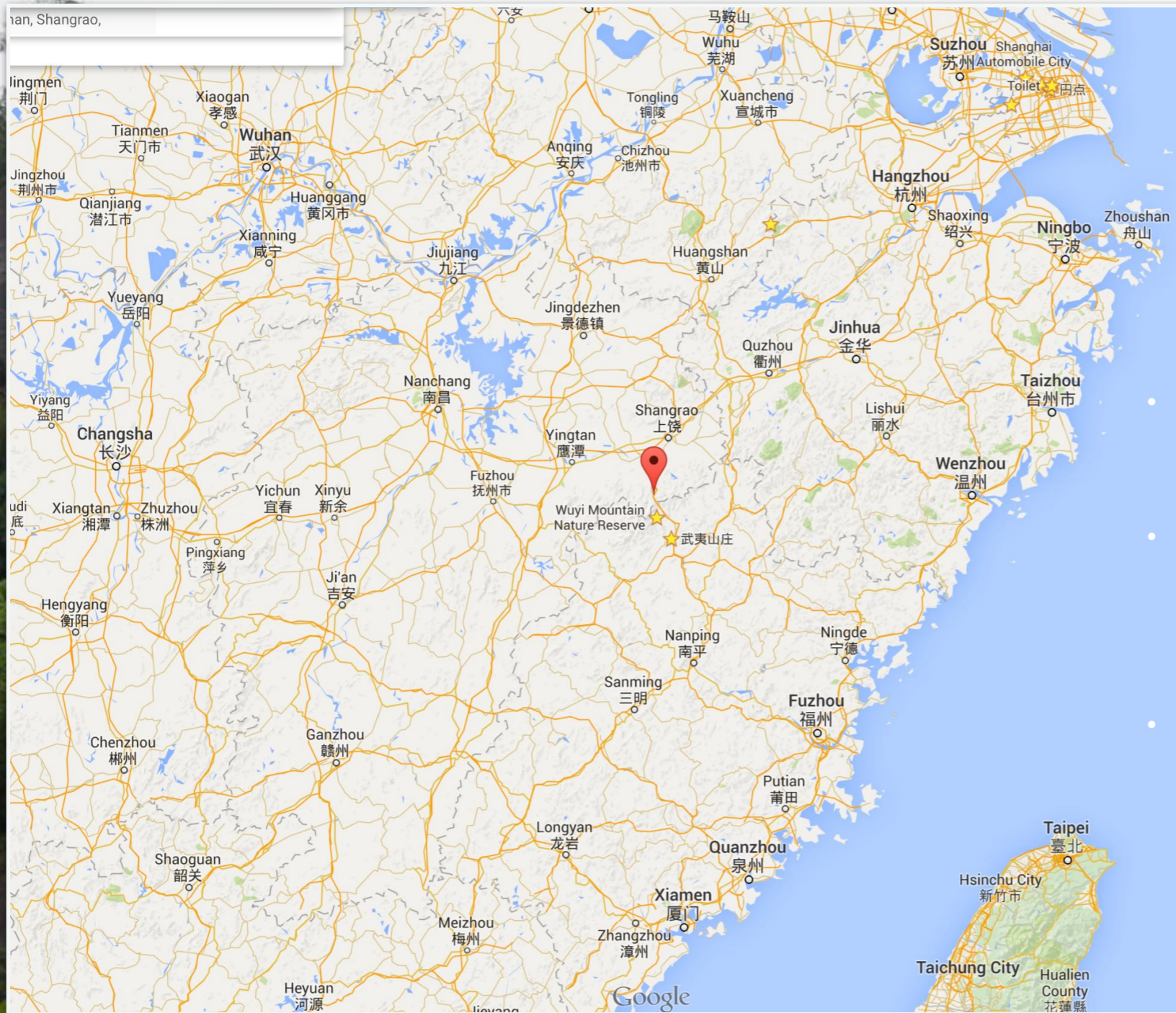
A scenic view of Wuyi Shan mountains in North West Fujian, China. The landscape is characterized by large, dark, rounded rock formations partially covered in lush green vegetation. A thick layer of mist or low clouds hangs between the peaks, creating a soft, ethereal atmosphere. In the foreground, there are bamboo-like plants with long, narrow leaves. The sky is overcast and grey.

WUYI Shan

North West Fujian
Nice hills







- **Flight in / out Wuyishan**

- **vFast train in / out - 3 hours Shanghai.**

- **Train to Sangrou and cycle in**

A well known mountain tourist spot. As with most busy tourist spots forget them and head around the local hills and farmer villages. Very nice. Many places to stay in Wuyi tourist area.



MANY HOTEL OPTIONS




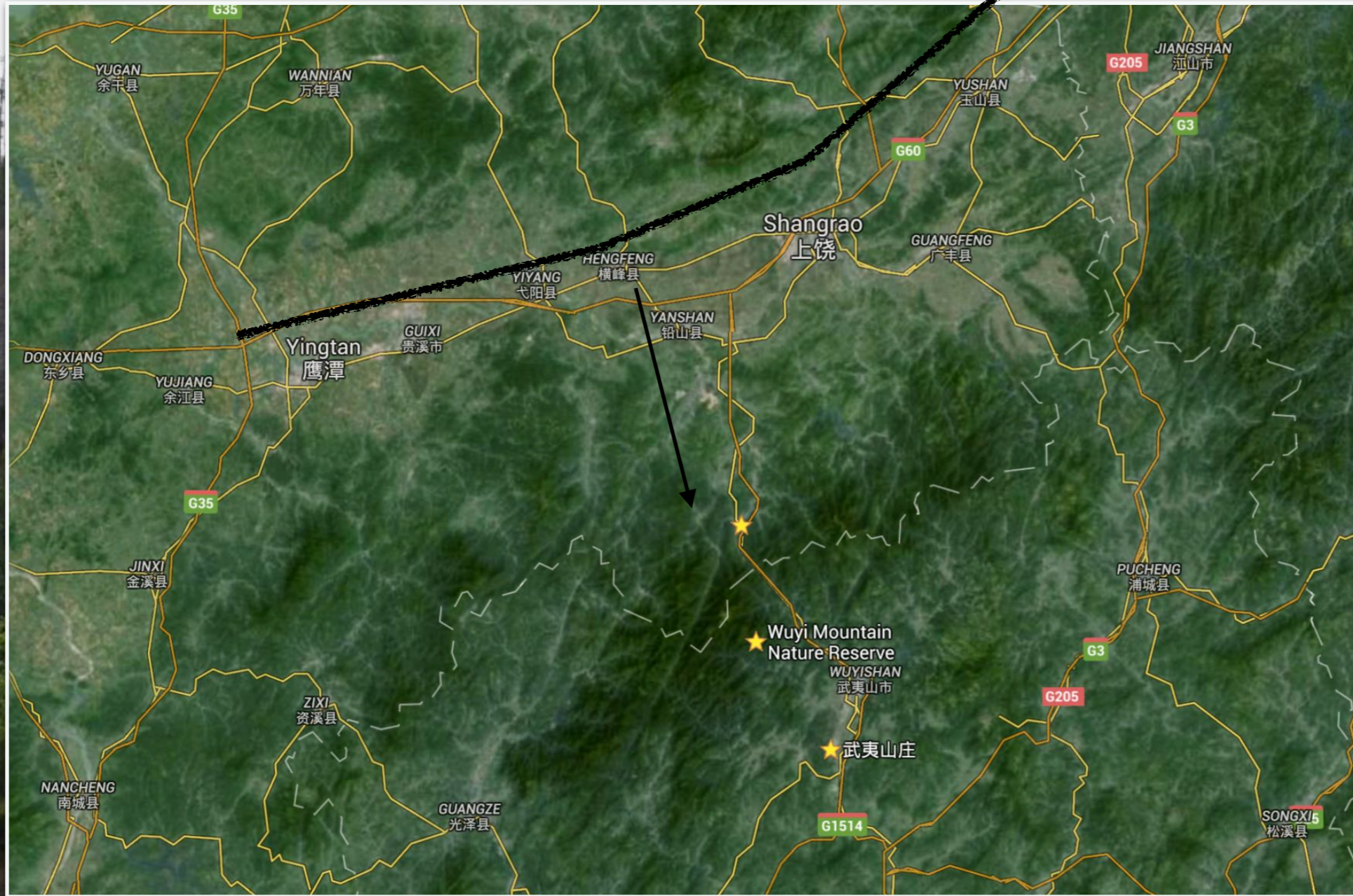




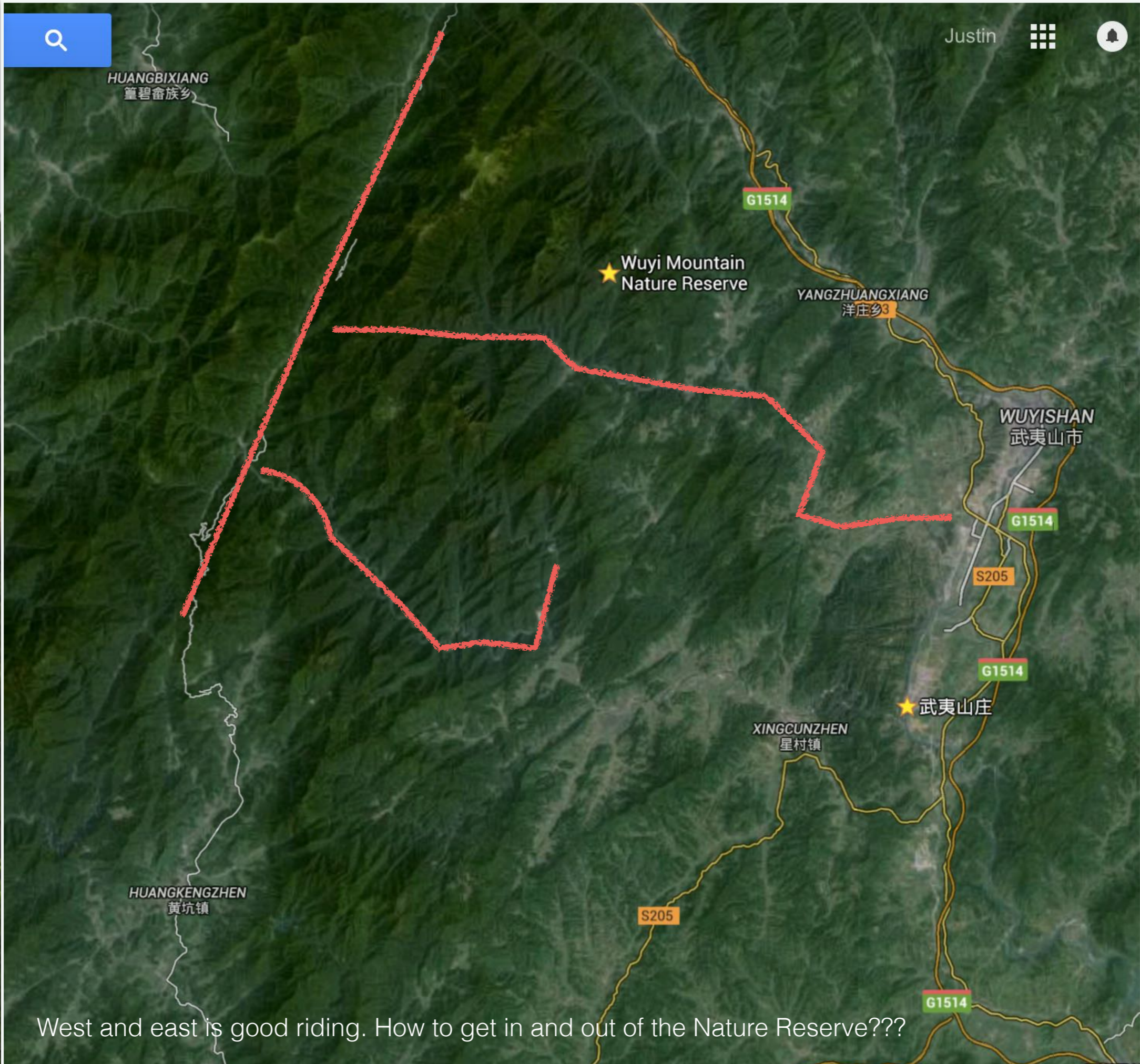


THE NATURE RESERVE RIDE

- 
- A photograph of a mountainous landscape. The foreground is filled with dense green foliage, including bamboo-like plants. In the middle ground, there are large, dark, rocky outcrops. The background shows more mountains, some of which are shrouded in a thick mist or fog, creating a sense of depth and atmosphere. The sky is overcast and grey.
- Wuyi Mountain Nature Reserve Ride - road is blocked from Wuyi / Fujian side but think open from Jiangxi side (north west).
 - basic place to stay?
 - 60km downhill
 - 3000m



Next trip train in from the north to Shangrao, cycle north to Wuyi Nature Reserve and then into the town.

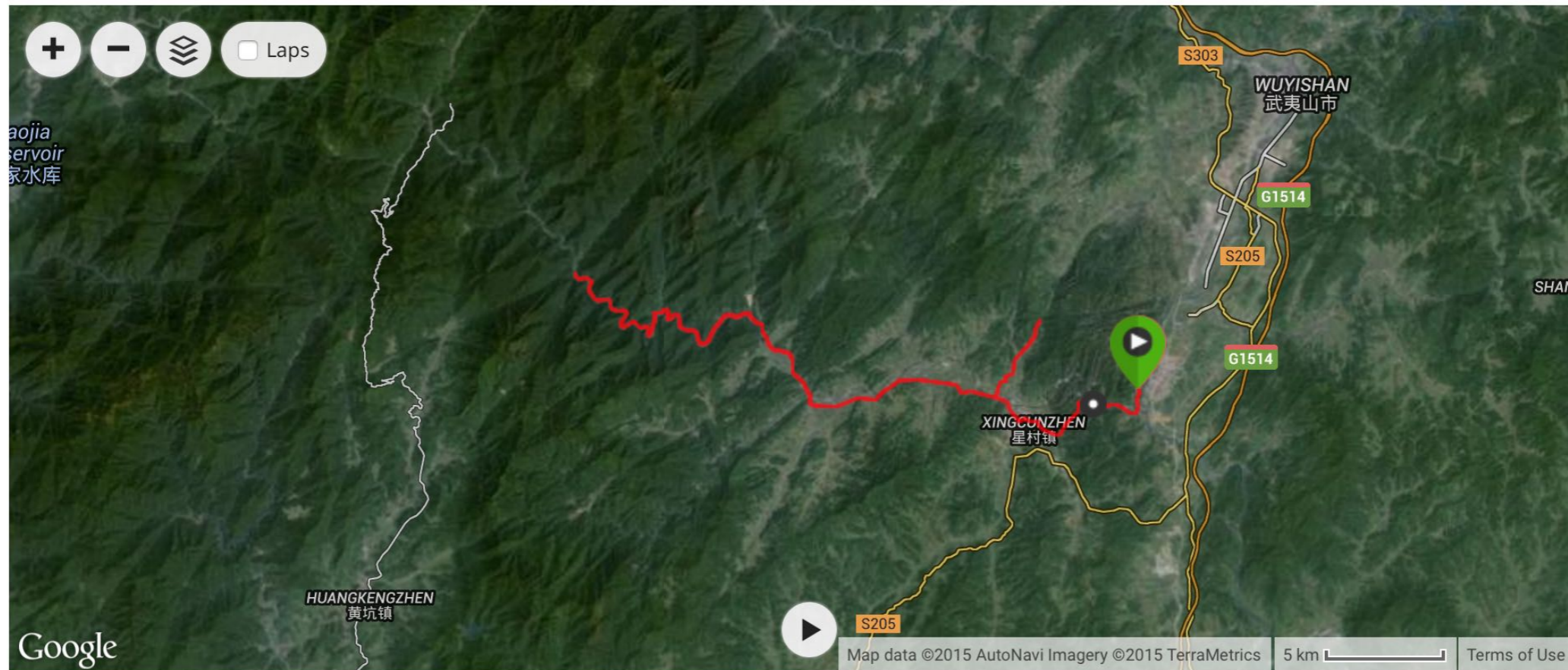


West and east is good riding. How to get in and out of the Nature Reserve???



Wuyi 2

Event Type: Uncategorized ▾ Course: -- ▾ Gear: [Add](#)



Over Time ▾

Customize ▾

● Elevation



To the nature reserve gate, not allowed in and cycled back
<https://connect.garmin.com/modern/activity/168148168>







Simple museum + hotel in the reserve
Run down

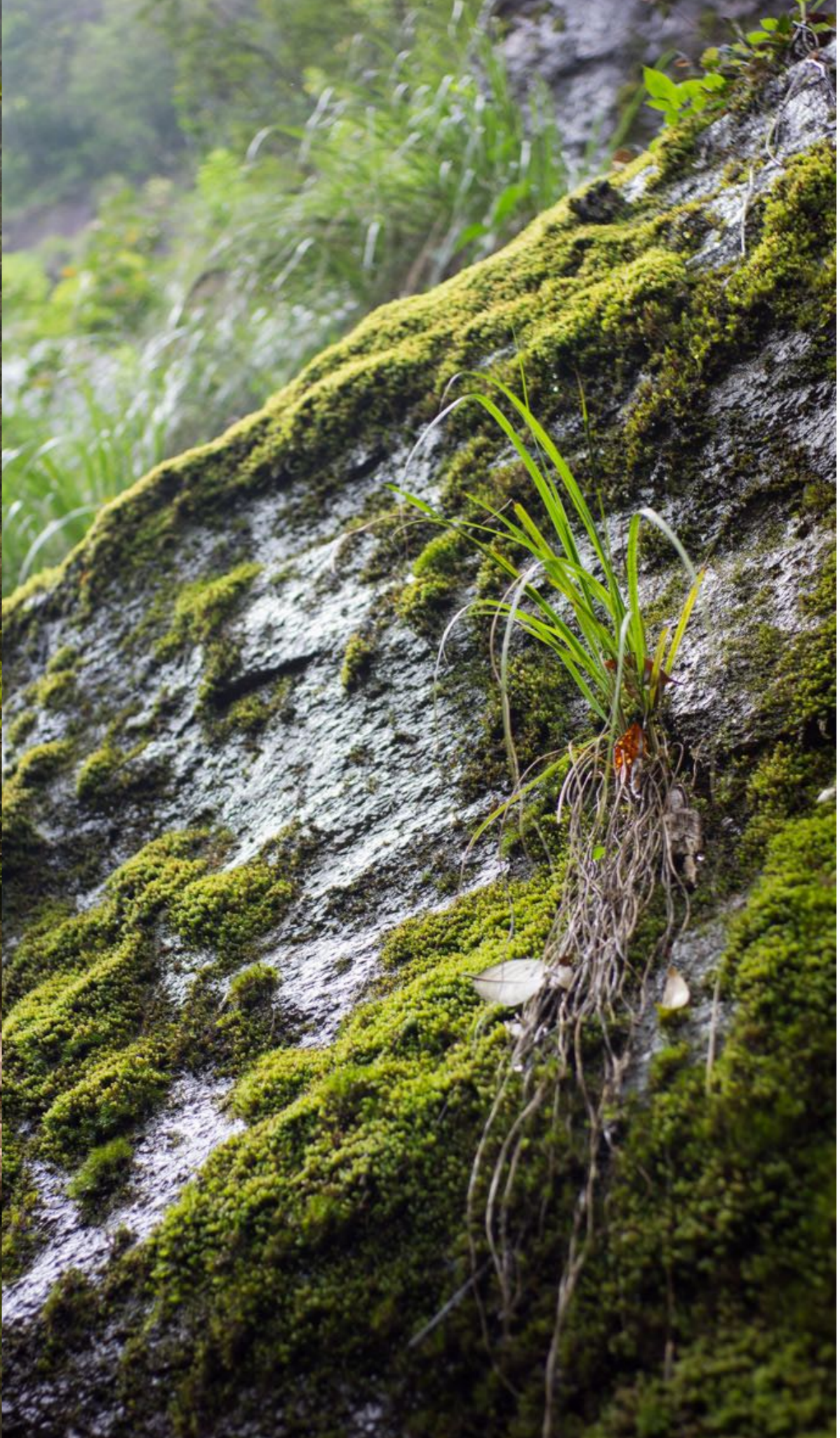




Climb to top



3000m+ summit





Otherwise need to explore places to swim



And out lying villages